

About Oniqua

Headquartered in Brisbane, Australia, and with offices in North America, Africa and Asia, Oniqua provides best-in-class Asset Performance Management (APM) solutions that improve the operational efficiencies and business performance of asset-intensive organizations. With advanced analytics capabilities, cross-functional integration, data cleansing services and seasoned industry expertise, Oniqua helps customers realize tangible benefits faster than any other APM provider. Oniqua's solutions are used by eight of the world's top 10 mining companies and two of the top 10 oil and gas companies, saving them millions of dollars each year in improved asset performance.

www.oniqua.com

Locations

Oniqua Analytics staff work at your site, from our service centers in Brisbane, Melbourne and Denver or at our near-shore service center in Bali, Indonesia. In this way, Oniqua can provide the ideal mix of face-to-face communication, Australian and US project management and quality assurance and the productivity and capacity provided by facilities located in a lower cost location.

ONIQUA Australia

ONIQUA Pty Ltd
Brisbane, Australia - Global Head Office
Level 5, 16 Marie Street, Milton, QLD, 4064
P.O. Box 1119, Milton, QLD, 4064
P: +61 7 3369 5506
F: +61 7 3369 6772
E: salesteam@oniqua.com

ONIQUA USA

Denver, United States of America
ONIQUA Inc.
Meridian Centre, 9800 Mt Pyramid Court, Suite 400
Englewood Co, 80112
P: +1 303 256 8006
F: +1 303 256 8008

Locations and partners around the globe



World leaders in Enterprise Analytics

Optimizing the operational efficiencies and business performance of asset-intensive organizations.



ONiQUA

ENTERPRISE ANALYTICS

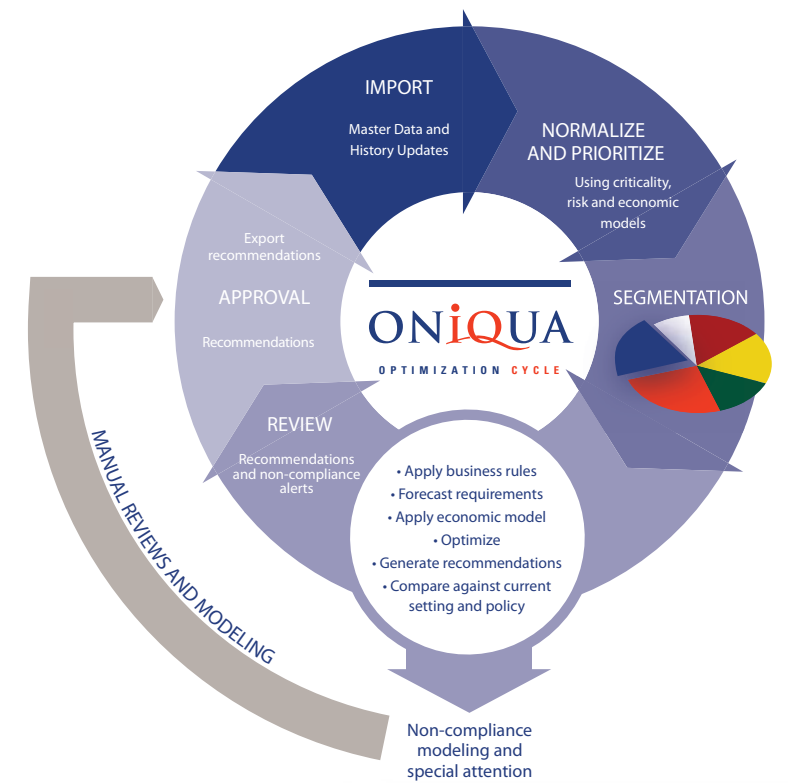
Driving Asset Performance

Oniqua Analytics Suite



Asset Performance Management For Continuous Business Improvement

At the heart of Oniqua Analytics Suite is the methodology that systematically delivers business improvement recommendations across large numbers of assets, large inventories and high procurement volumes.

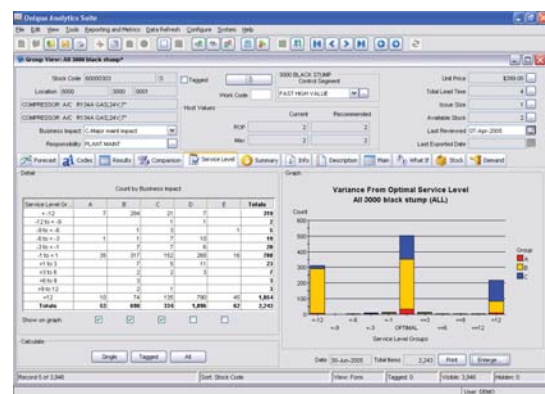


Oniqua Analytic Suite comprises six scalable and fully integrated modules: Reliability, Maintenance, Inventory, Procurement, Workbench and Portal. Deployment is quick with standard connectors available for all major ERP systems and a comprehensive implementation methodology that delivers early benefits.

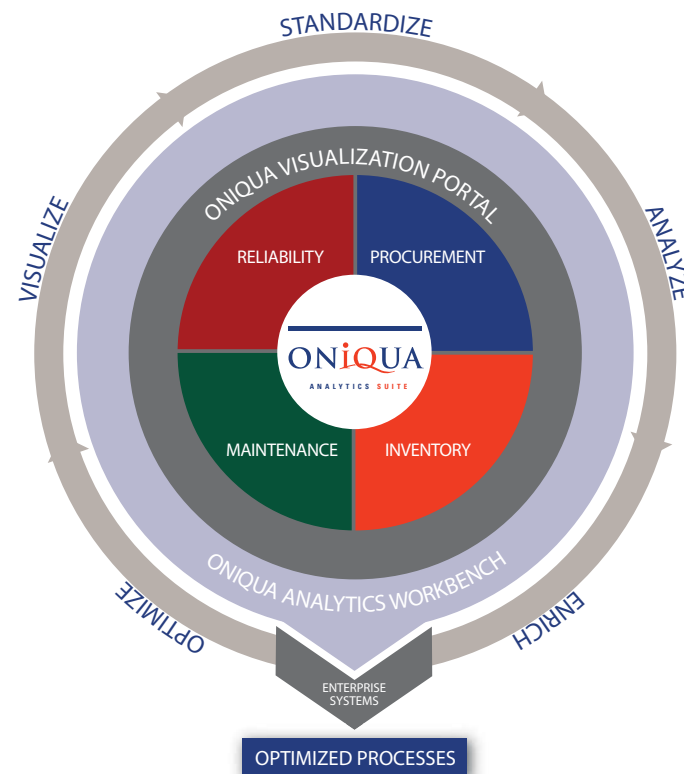
Available for deployment either as a traditional on premise installation or Software as a Service, Oniqua Analytic Suite delivers many benefits and features through an integrated approach to asset performance management. Oniqua Analytic Suite enables asset managers to address all major areas of asset reliability encompassing maintenance strategy performance right through to spare parts availability and supply chain performance.

Oniqua Analytic Suite is designed to deliver continuous value as business conditions change with an easy to use Portal providing corporate visibility to managers, and the Workbench enabling knowledge workers to integrate detailed business activities in a value-driven context. Oniqua Analytic Suite's Work Queues are a powerful way of highlighting and prioritizing issues and variations from policy to ensure that issues are systematically and consistently addressed.

Oniqua Analytic Suite enables line managers to align their resources with a shared understanding of each other's business imperatives as business conditions change. With well aligned functional teams and high levels of visibility, businesses are able to boost the return on assets and reduce working capital requirements.



Projected inventory performance levels at a glance.
Representation of: Items at Risk - Optimal - Excess Investment.



Intelligently balancing risk and costs to deliver continuous improvement in asset performance

ASSET OPTIMIZATION

OAS-Reliability bridges the gap between theoretical reliability models and maintenance practice by using historical data to fine-tune maintenance strategy to business conditions. Key features include:

- Reliability Block Modelling
- Reliability Centred Maintenance (RCM) Weibull Analysis
- Life Cycle Costing
- Strategy libraries.

OAS-Maintenance allows users to understand the impacts of maintenance and the value it delivers to the business. With full historical analysis capabilities, users can assess whether the maintenance strategy is actually being performed, the effectiveness of the strategy and then implement value-driven standardized schedules. Key features are:

- Full work history and costs (Labour, materials and downtime)
- Failure analysis and trends
- Strategy improvement
- Deployment of RCM strategy
- Non-compliance alerts.

SUPPLY CHAIN OPTIMIZATION

OAS-Inventory delivers full inventory optimization across all inventory segments from fast moving through to slow moving spares. Key features include:

- Optimal service levels based upon risk, supplier performance and inventory profile
- Visibility
- Economic order quantities
- Systematic application of inventory policy
- Automatic recommendations.

OAS-Procurement delivers visibility of all key procurement activities. With access to full transactional detail, users can examine all facets of the supply chain from requisition through to invoice payment in one environment enabling bottlenecks and risk to be identified and eliminated proactively. Key features include:

- Spend visibility and analysis
- Price analysis
- Supplier scorecards and risk
- Supplier relationship management
- Supply chain performance
- Contract compliance
- Category and commodities analysis.

USER INTERACTION

OAS-Portal enables infrequent and frequent users alike to access key performance reports using web style access. The Portal can be configured to 'push' key information to managers as well enable knowledge works to interrogate asset and supply chain performance in many ways. The portal provides many ways to understand how the business is operating through:

- KPI's
- Standard Reports
- User-written reports
- On-line graphical analysis.

OAS-Workbench is an interactive environment that allows key users access to manage information and tasks. Users can create 'information of interest' groups (e.g. items a supplier provides) so that detailed reviews and what-if scenario modelling can be performed at an individual level, group level or sub-group level. Key features include:

- Powerful selection criteria
- Detailed access to transactional data
- Graphical profiling of most data fields
- High level statistics
- Work queue management.

